



CSXi
Series

Installation Instructions

Spanish German Italian



WARNING - Disconnect from power source before installing or servicing.

SPANISH - Disconnect from power source before installing or servicing.

GERMAN - Disconnect from power source before installing or servicing.

ITALIAN - Disconnect from power source before installing or servicing.

Range
Spanish
German
Italian

CSXi - [] - [] - []

Control Supply (A1, A2, A3)

| | |
|----|---------------------------|
| C1 | 110-240 VAC & 380-440 VAC |
| C2 | 24 VAC/VDC |

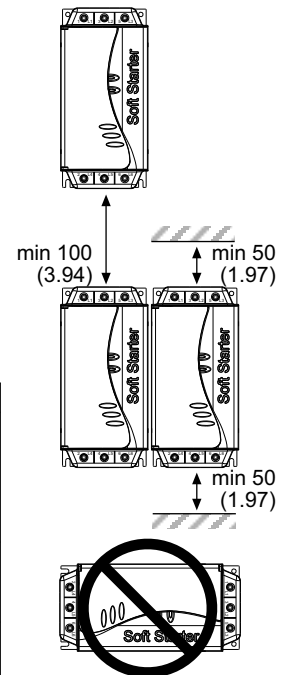
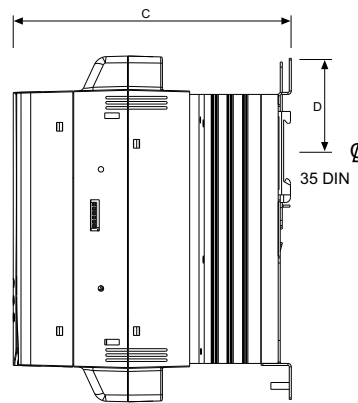
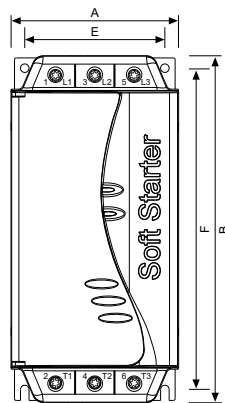
Mains Supply (L1, L2, L3)

| | |
|----|---------------------------|
| V4 | 3Ø, 200-440 VAC, 45-66 Hz |
| V6 | 3Ø, 200-575 VAC, 45-66 Hz |

Maximum Motor FLC

| | AC53b 4-6:354 | AC53b 4-20:340 |
|-----|---------------|----------------|
| 007 | 18 A | 16 A |
| 015 | 34 A | 31 A |
| 018 | 42 A | 37 A |
| 022 | 48 A | 46 A |
| 030 | 60 A | 48 A |
| | AC53b 4-6:594 | AC53b 4-20:580 |
| 037 | 75 A | 67 A |
| 045 | 85 A | 72 A |
| 055 | 100 A | 92 A |
| 075 | 140 A | 116 A |
| 090 | 170 A | 138 A |
| 110 | 200 A | 160 A |

Dimensions
Spanish
German
Italian



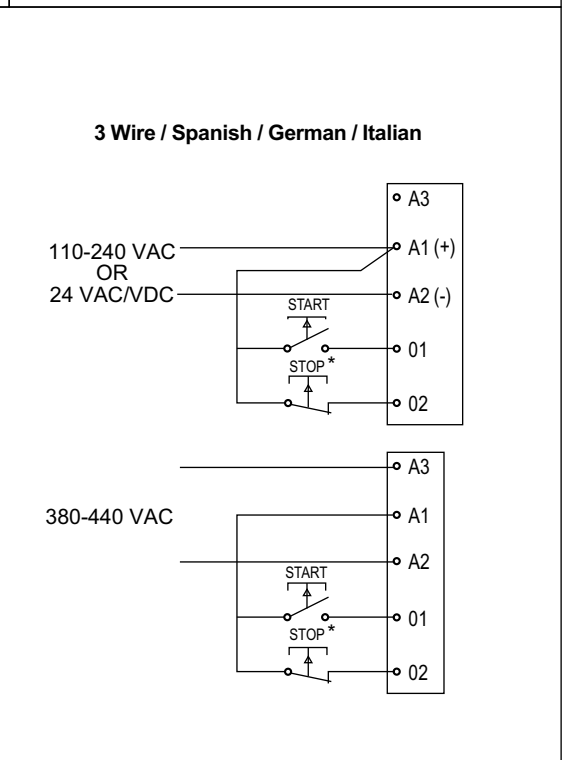
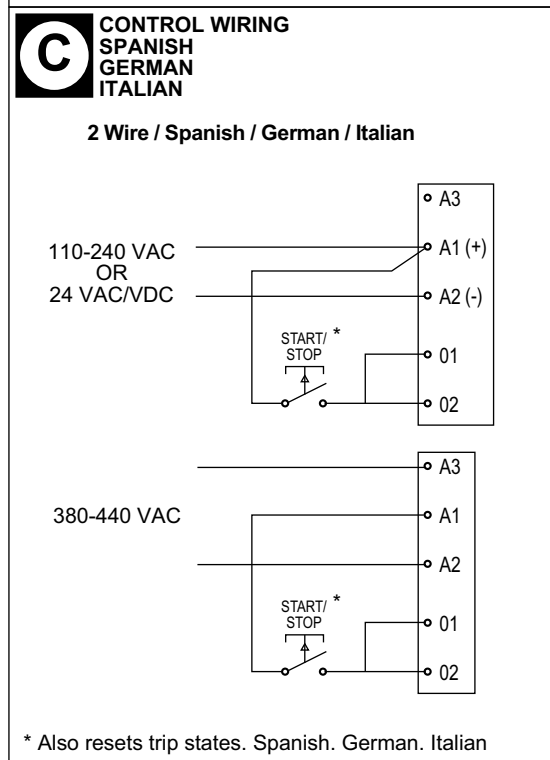
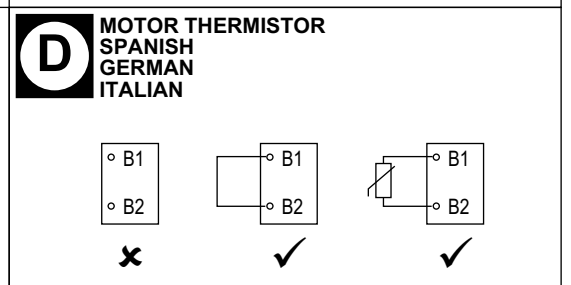
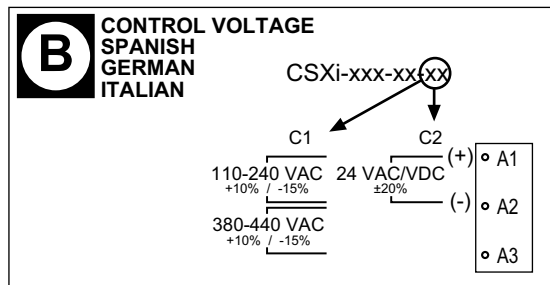
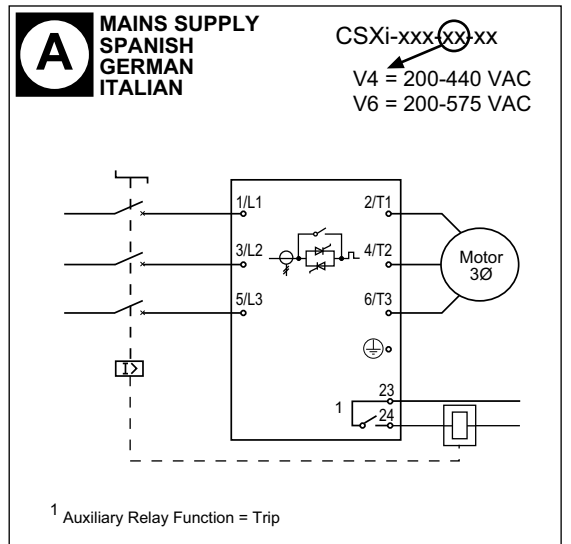
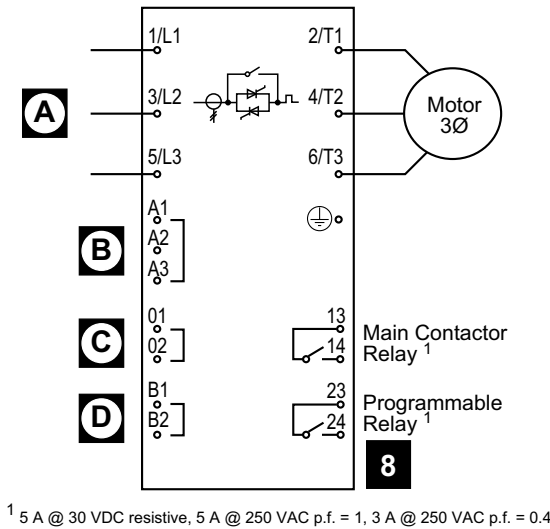
| MODEL | A | B | C | D | E | F |
|-------|------------|------------|------------|-----------|------------|------------|
| 007 | | | | | | |
| 015 | | | | | | |
| 018 | 98 (3.86) | 203 (7.99) | 163 (6.42) | 55 (2.17) | 82 (3.23) | 188 (7.40) |
| 022 | | | | | | |
| 030 | | | | | | |
| 037 | | | | | | |
| 045 | 145 (5.71) | 215 (8.46) | 191 (7.52) | - | 124 (4.88) | 196 (7.72) |
| 055 | | | | | | |
| 075 | | | | | | |
| 090 | 202 (7.95) | 240 (9.45) | 212 (8.35) | - | 160 (6.30) | 204 (8.03) |
| 110 | | | | | | |

mm (inch)

Wiring
Spanish
German
Italian

| 75°C Wire Use copper conductors only | L1/1, L2/3, L3/5, T1/2, T2/4, T3/6 mm ² (AWG) | | | A1, A2, A3, 01, 02, B4, B5, 13, 14, 23, 24 mm ² (AWG) |
|--|---|--|-----------|--|
| | 007 ~ 030 | 037 ~ 055 | 075 ~ 110 | 007 ~ 110 |
| | 10 - 35 (8 - 2) | 25 - 70 (4 - 2/0) | N.A. | 0.14 - 1.5 (26 - 16) |
| | 10 - 35 (8 - 2) | 14 (0.55) mm (inch) | N.A. | 0.14 - 1.5 (26 - 16) |
| | Torx (T20) 3 - 5 Nm 2.2 - 3.7 ft-lb | Torx (T20) 4 - 6 Nm. 2.9 - 4.4 ft-lb | N.A. | N.A. |
| | 7 mm 3 - 5 Nm 2.2 - 3.7 ft-lb | 7 mm 4 - 6 Nm 2.9 - 4.4 ft-lb | N.A. | 3.5 mm 0.5 Nm max 4.4 lb-in max |

Electrical Schematic
Spanish
German
Italian

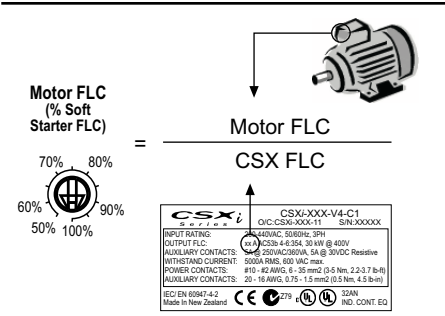


LOCAL RESET
SPANISH
GERMAN
ITALIAN

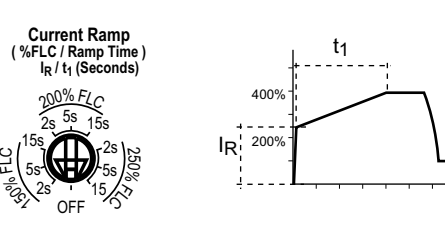
5

Adjustments
Spanish
German
Italian

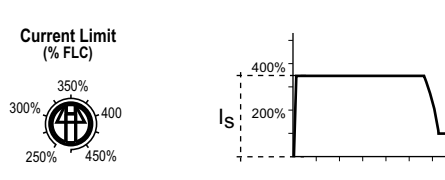
1 MOTOR FLC
SPANISH
GERMAN
ITALIAN



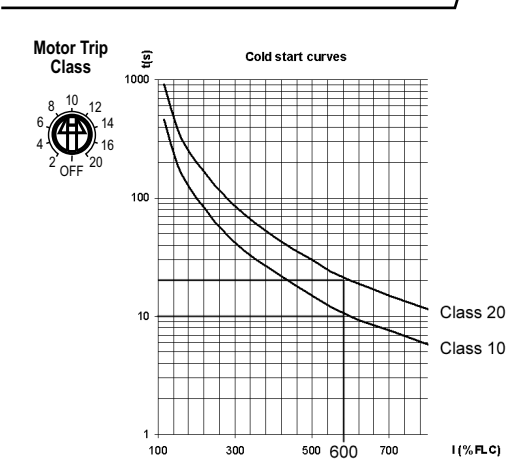
2 CURRENT RAMP
SPANISH
GERMAN
ITALIAN



3 CURRENT LIMIT
SPANISH
GERMAN
ITALIAN



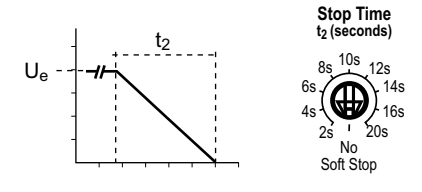
4 MOTOR TRIP CLASS
SPANISH
GERMAN
ITALIAN



OFF = No overload protection
 Spanish
 German
 Italian

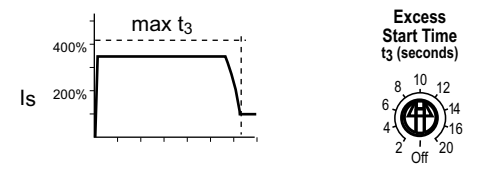
SOFT STOP TIME
SPANISH
GERMAN
ITALIAN

6



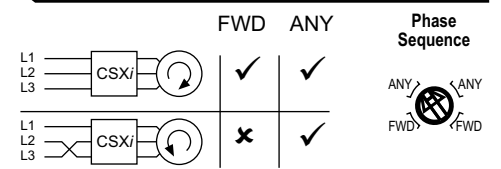
EXCESS START TIME
SPANISH
GERMAN
ITALIAN

7



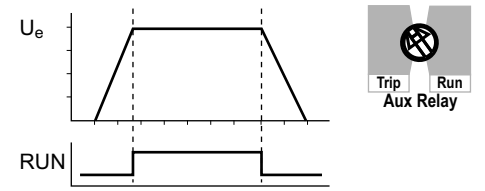
PHASE SEQUENCE PROTECTION
SPANISH
GERMAN
ITALIAN

8

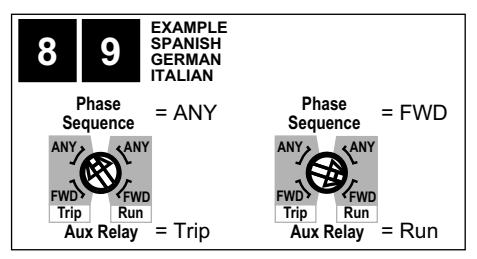


AUXILIARY RELAY FUNCTION
SPANISH
GERMAN
ITALIAN

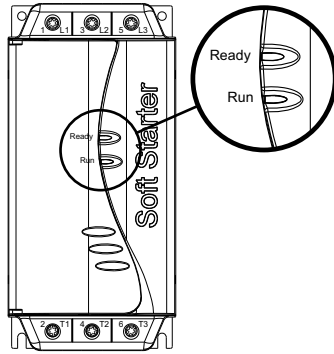
9



Trip = Fault, Spanish, German, Italian



Indication
Spanish
German
Italian



| | Ready | Run |
|---------------------------------------|--|---|
| Off Spanish German Italian | No control power Spanish German Italian | Motor not running Spanish German Italian |
| On Spanish German Italian | Ready Spanish German Italian | Motor running at full speed Spanish German Italian |
| Flash Spanish German Italian | Starter tripped Spanish German Italian | Motor starting or stopping Spanish German Italian |

Trouble Shooting
Spanish
German
Italian

| Ready | Description / Spanish / German / Italian |
|-------|--|
| x 1 | Power Circuit: Check mains supply L1,L2 & L3, motor circuit T1,T2 & T3 and soft starter SCRs. Spanish German Italian |
| x 2 | Excess Start Time: Check load, increase Current Limit or adjust Excess Start Time setting. Spanish German Italian |
| x 3 | Motor Overload: Allow motor to cool, reset soft starter and restart. Soft starter cannot be reset until motor has cooled adequately. Spanish German Italian |
| x 4 | Motor Thermistor: Check motor ventilation and thermistor connection B1 & B2. Allow motor to cool. Spanish German Italian |
| x 5 | Phase Imbalance: Check line current L1, L2 & L3. Spanish German Italian |
| x 6 | Supply Frequency: Check supply frequency is in range. Spanish German Italian |
| x 7 | Phase Sequence: Check for correct phase rotation. Spanish German Italian |
| x 8 | Communications Failure (between soft starter and optional accessory module): Check plug connection. Spanish German Italian |



CAUTION - Disconnect from power source before installing or servicing.
SPANISH - Disconnect from power source before installing or servicing.
GERMAN - Disconnect from power source before installing or servicing.
ITALIAN - Disconnect from power source before installing or servicing.



CAUTION - This product has been designed for Class A equipment. Use of this product in domestic environments may cause radio interference.
SPANISH - This product has been designed for Class A equipment. Use of this product in domestic environments may cause radio interference.
GERMAN - This product has been designed for Class A equipment. Use of this product in domestic environments may cause radio interference.
ITALIAN - This product has been designed for Class A equipment. Use of this product in domestic environments may cause radio interference.



CAUTION - Do not connect power factor correction capacitors between the soft starter and the motor.
SPANISH - Do not connect power factor correction capacitors between the soft starter and the motor.
GERMAN - Do not connect power factor correction capacitors between the soft starter and the motor.
ITALIAN - Do not connect power factor correction capacitors between the soft starter and the motor.

